



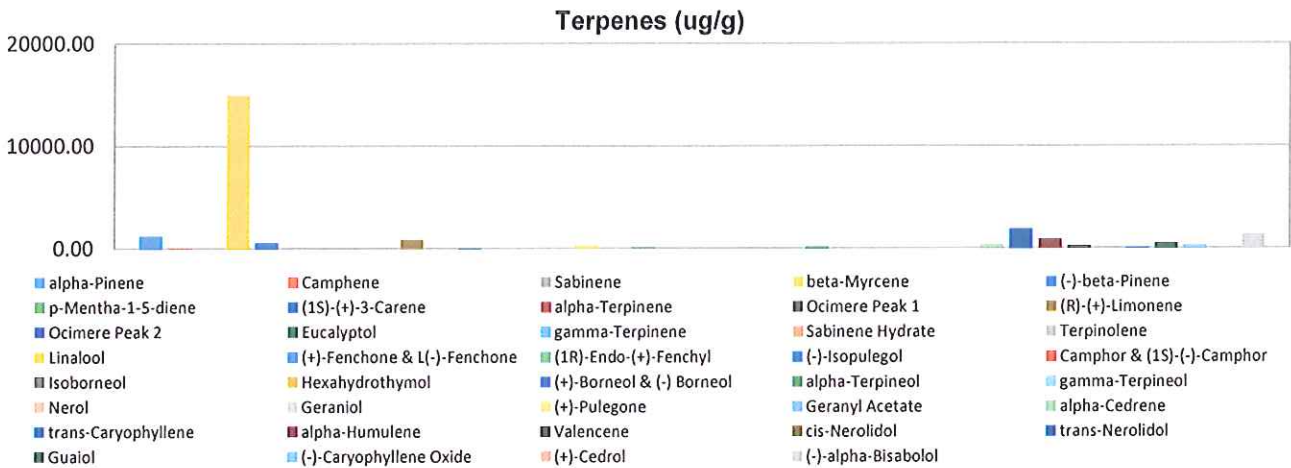
Terpenes Profile

Customer: PWP Greenhouses
Customer Sample ID: PWP-Wife
Laboratory Number: 201811-0698
Extraction Technician: MTO
Analytical Chemist: RH

Extraction Date(s)	Analysis Date(s)
11/30/2018	11/30/2018

Terpene	Results ug/g	Terpene	Results ug/g
alpha-Pinene	1243.78	Isoborneol	
Camphene	64.73	Hexahydrothymol	
Sabinene		(+)-Borneol & (-) Borneol	
beta-Myrcene	14946.82	alpha-Terpineol	131.65
(-)-beta-Pinene	570.80	gamma-Terpineol	
p-Mentha-1-5-diene		Nerol	
(1S)-(+)-3-Carene		Geraniol	
alpha-Terpinene		(+)-Pulegone	
Ocimere Peak 1		Geranyl Acetate	
(R)-(+)-Limonene	847.64	alpha-Cedrene	315.08
Ocimere Peak 2		trans-Caryophyllene	1878.51
Eucalyptol	25.69	alpha-Humulene	849.03
gamma-Terpinene		Valencene	186.42
Sabinene Hydrate		cis-Nerolidol	
Terpinolene		trans-Nerolidol	57.36
Linalool	237.20	Guaiol	452.70
(+)-Fenchone & L(-)-Fenchone		(-)-Caryophyllene Oxide	275.44
(1R)-Endo-(+)-Fenchyl	105.95	(+)-Cedrol	
(-)-Isopulegol		(-)-alpha-Bisabolol	1310.89
Camphor & (1S)-(-)-Camphor			

Empty result indicates data is less than detection limit. Reporting Limit is roughly 40 ug/g depending on amount extracted.



Altitude Consulting, LLC utilizes NIST traceable Reference Standards and Certified Reference Material to calibrate analytical instruments along with proven analytical methods. The methods are applied in the most ethical manner following good laboratory practice guidelines. The results of this report are based solely on the sample submitted and cannot be reproduced.



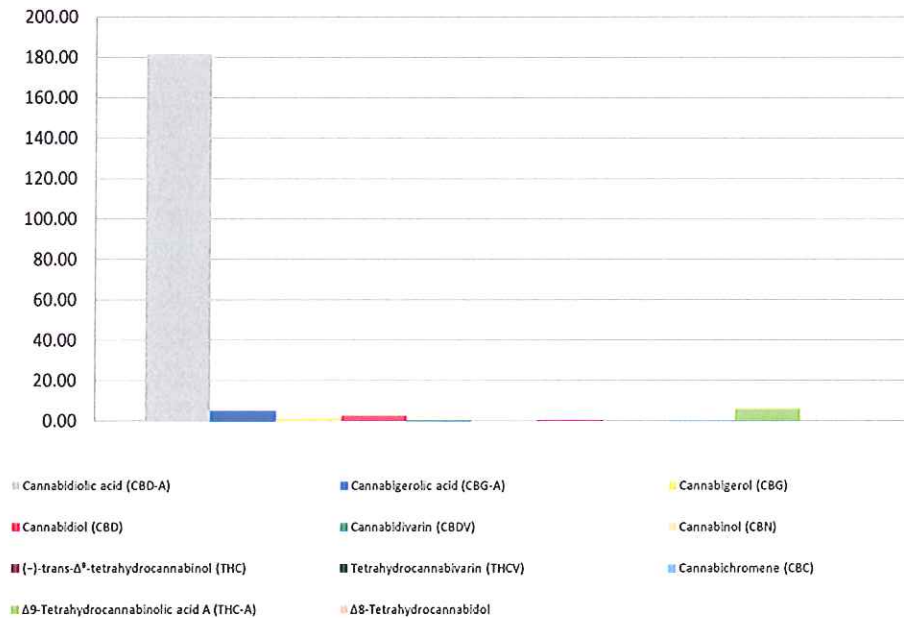
Cannabinoid Profile

Customer: PWP Greenhouses
Customer Sample ID: PWP-Wife
Laboratory Number: 201811-0698
Extraction Technician: MTO
Analytical Chemist: RH

Extraction Date(s)	Analysis Date(s)
11/30/2018	11/30/2018

Cannabinoid (HPLC)		Results	
	LOD (mg/g)	Percent	mg/g
Δ8-Tetrahydrocannabinol		0.011%	0.11
Cannabidiolic acid (CBD-A)		18.173%	181.73
Cannabigerolic acid (CBG-A)		0.515%	5.15
Cannabigerol (CBG)		0.078%	0.78
Cannabidiol (CBD)		0.223%	2.23
Cannabidivarin (CBDV)		0.037%	0.37
Cannabinol (CBN)		0.012%	0.12
(-)-trans-Δ ⁹ -tetrahydrocannabinol (THC)		0.033%	0.33
Tetrahydrocannabivarin (THCV)	<0.05		
Cannabichromene (CBC)		0.032%	0.32
Δ ⁹ -Tetrahydrocannabinolic acid A (THC-A)		0.594%	5.94
Cannabinoids Total		Percent	mg/g
Max Active THC		0.55%	5.54
Max Active CBD		16.16%	161.61
T. Active Cannabinoids		0.39%	3.89
Total Cannabinoids		19.71%	197.09
Ratios			
29.35		:1 CBD to THC	0.03 :1 THC to CBD

Cannabinoid (mg/g)



Altitude Consulting, LLC utilizes NIST traceable Reference Standards and Certified Reference Material to calibrate analytical instruments along with proven analytical methods. The methods are applied in the most ethical manner following good laboratory practice guidelines. The results of this report are based solely on the sample submitted and cannot be reproduced.