



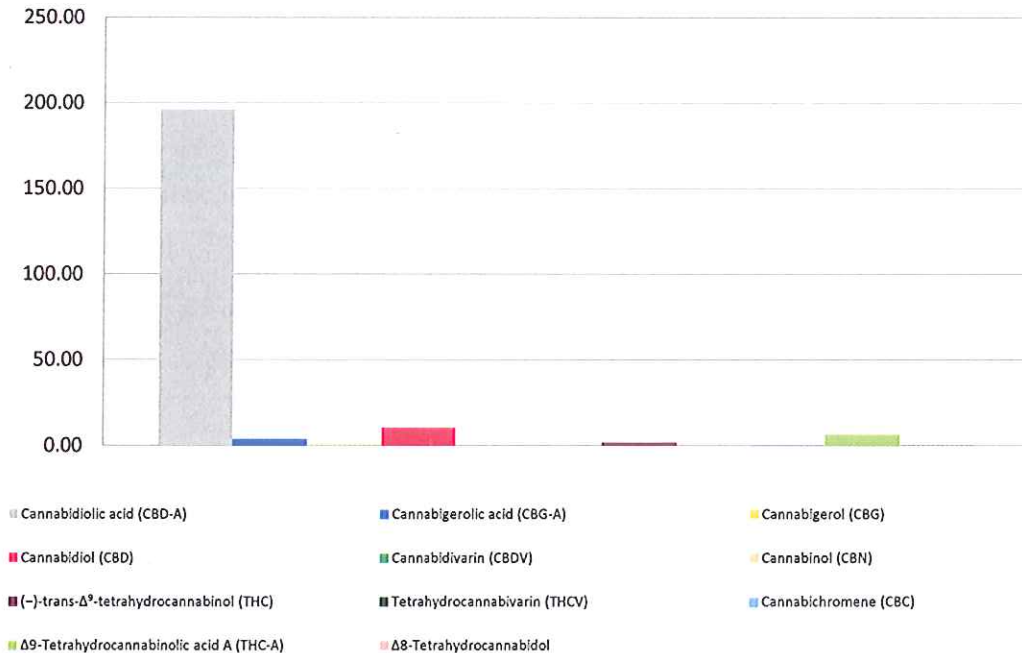
Cannabinoid Profile

Customer: PWP Greenhouses
Customer Sample ID: PWP Sweetened 01
Laboratory Number: 201810-0383
Extraction Technician: MTO
Analytical Chemist: GB

Extraction Date(s)	Analysis Date(s)
10/23/2018	10/23/2018

Cannabinoid (HPLC)		Results	
	LOD (mg/g)	Percent	mg/g
Δ8-Tetrahydrocannabinol		0.028%	0.28
Cannabidiolic acid (CBD-A)		19.627%	196.27
Cannabigerolic acid (CBG-A)		0.383%	3.83
Cannabigerol (CBG)		0.036%	0.36
Cannabidiol (CBD)		1.015%	10.15
Cannabidivarin (CBDV)	<0.05		
Cannabinol (CBN)	<0.05		
(-)-trans-Δ ⁹ -tetrahydrocannabinol (THC)		0.155%	1.55
Tetrahydrocannabivarin (THCV)	<0.05		
Cannabichromene (CBC)		0.031%	0.31
Δ9-Tetrahydrocannabinolic acid A (THC-A)		0.641%	6.41
Cannabinoids Total		Percent	mg/g
Max Active THC		0.72%	7.17
Max Active CBD		18.23%	182.28
T. Active Cannabinoids		1.27%	12.65
Total Cannabinoids		21.92%	219.17
Ratios			
25.92 :1 CBD to THC		0.04 :1 THC to CBD	

Cannabinoid (mg/g)





Terpenes Profile

Customer: PWP Greenhouses
 Customer Sample ID: PWP Sweetened 01
 Laboratory Number: 201810-0383
 Extraction Technician: MTO
 Analytical Chemist: GB

Extraction Date(s): 10/23/2018
 Analysis Date(s): 10/23/2018

Terpene	Results	Terpene	Results
	ug/g		ug/g
alpha-Pinene	154.76	Isoborneol	
Camphene		Hexahydrothymol	
Sabinene		(+)-Borneol & (-) Borneol	
beta-Myrcene	3564.39	alpha-Terpineol	124.95
(-)-beta-Pinene		gamma-Terpineol	
p-Mentha-1-5-diene		Nerol	
(1S)-(+)-3-Carene		Geraniol	
alpha-Terpinene		(+)-Pulegone	
Ocimere Peak 1	52.73	Geranyl Acetate	
(R)-(+)-Limonene	764.23	alpha-Cedrene	855.18
Ocimere Peak 2	288.12	trans-Caryophyllene	3401.99
Eucalyptol	56.55	alpha-Humulene	1124.95
gamma-Terpinene		Valencene	209.78
Sabinene Hydrate		cis-Nerolidol	
Terpinolene		trans-Nerolidol	197.17
Linalool		Guaiol	1028.28
(+)-Fenchone & L(-)-Fenchone		(-)-Caryophyllene Oxide	494.46
(1R)-Endo-(+)-Fenchyl	141.38	(+)-Cedrol	
(-)-Isopulegol		(-)-alpha-Bisabolol	
Camphor & (1S)-(-)-Camphor			

Empty result indicates data is less than detection limit. Reporting Limit is roughly 40 ug/g depending on amount extracted.

Terpenes (ug/g)

