



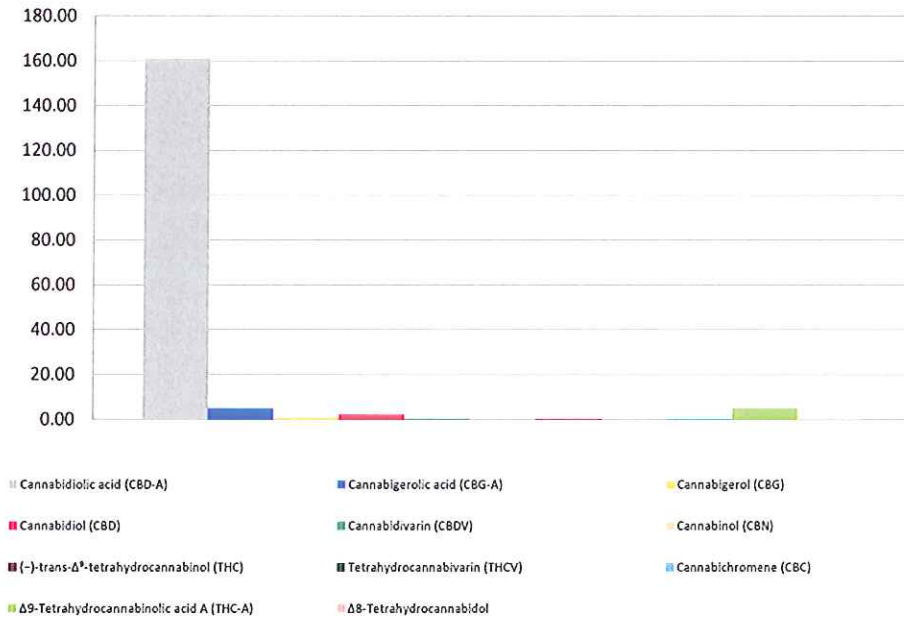
Cannabinoid Profile

Customer: PWP Greenhouses
 Customer Sample ID: PWP Franklin
 Laboratory Number: 201811-0391
 Extraction Technician: MTO
 Analytical Chemist: GB

Extraction Date(s):	Analysis Date(s)
11/16/2018	11/16/2018

Cannabinoid (HPLC)		Results	
	LOD (mg/g)	Percent	mg/g
Δ8-Tetrahydrocannabinol		0.009%	0.09
Cannabidiolic acid (CBD-A)		16.088%	160.88
Cannabigerolic acid (CBG-A)		0.488%	4.88
Cannabigerol (CBG)		0.058%	0.58
Cannabidiol (CBD)		0.217%	2.17
Cannabidivarin (CBDV)		0.020%	0.20
Cannabinol (CBN)	<0.05		
(-)-trans-Δ ⁹ -tetrahydrocannabinol (THC)		0.025%	0.25
Tetrahydrocannabivarin (THCV)	<0.05		
Cannabichromene (CBC)		0.021%	0.21
Δ ⁹ -Tetrahydrocannabinolic acid A (THC-A)		0.507%	5.07
Cannabinoids Total		Percent	mg/g
Max Active THC		0.47%	4.69
Max Active CBD		14.33%	143.25
T. Active Cannabinoids		0.33%	3.30
Total Cannabinoids		17.43%	174.32
Ratios			
30.67		:1 CBD to THC	0.03 :1 THC to CBD

Cannabinoid (mg/g)



Altitude Consulting, LLC utilizes NIST traceable Reference Standards and Certified Reference Material to calibrate analytical instruments along with proven analytical methods. The methods are applied in the most ethical manner following good laboratory practice guidelines. The results of this report are based solely on the sample submitted and cannot be reproduced.



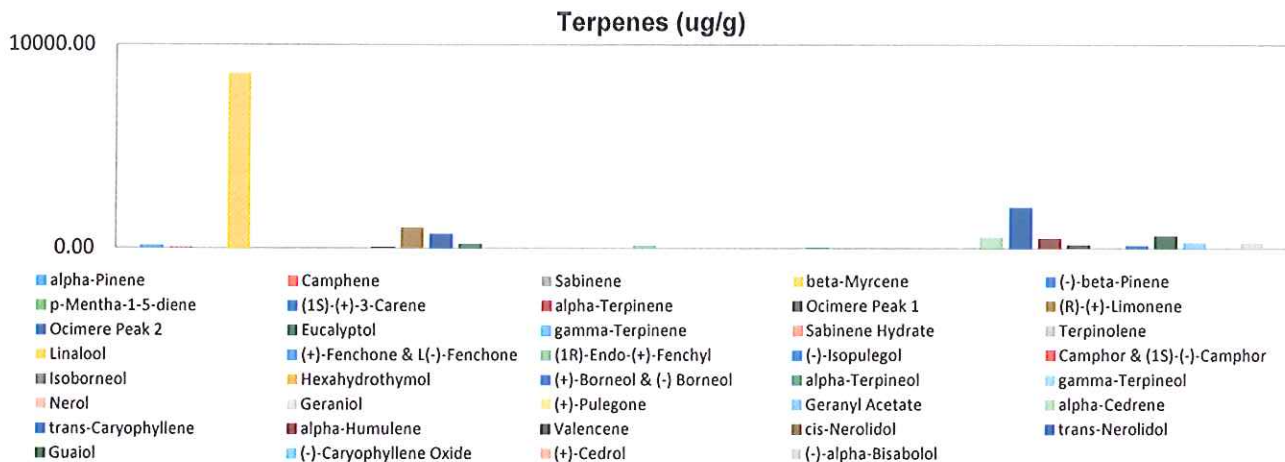
Terpenes Profile

Customer: PWP Greenhouses
Customer Sample ID: PWP Franklin
Laboratory Number: 201811-0391
Extraction Technician: MTO
Analytical Chemist: GB

Extraction Date(s)	Analysis Date(s)
11/16/2018	11/16/2018

Terpene	Results ug/g	Terpene	Results ug/g
alpha-Pinene	105.72	Isoborneol	
Camphene	22.58	Hexahydrothymol	
Sabinene		(+)-Borneol & (-) Borneol	
beta-Myrcene	8575.94	alpha-Terpineol	34.97
(-)-beta-Pinene		gamma-Terpineol	
p-Mentha-1-5-diene		Nerol	
(1S)-(+)-3-Carene		Geraniol	
alpha-Terpinene		(+)-Pulegone	
Ocimere Peak 1	37.37	Geranyl Acetate	
(R)-(+)-Limonene	984.61	alpha-Cedrene	540.37
Ocimere Peak 2	671.66	trans-Caryophyllene	1992.01
Eucalyptol	176.26	alpha-Humulene	464.63
gamma-Terpinene		Valencene	140.69
Sabinene Hydrate		cis-Nerolidol	
Terpinolene		trans-Nerolidol	113.91
Linalool		Guaiol	584.13
(+)-Fenchone & L(-)-Fenchone		(-)-Caryophyllene Oxide	275.58
(1R)-Endo-(+)-Fenchyl	112.71	(+)-Cedrol	
(-)-Isopulegol		(-)-alpha-Bisabolol	257.39
Camphor & (1S)-(-)-Camphor			

Empty result indicates data is less than detection limit. Reporting Limit is roughly 40 ug/g depending on amount extracted.



Altitude Consulting, LLC utilizes NIST traceable Reference Standards and Certified Reference Material to calibrate analytical instruments along with proven analytical methods. The methods are applied in the most ethical manner following good laboratory practice guidelines. The results of this report are based solely on the sample submitted and cannot be reproduced.