



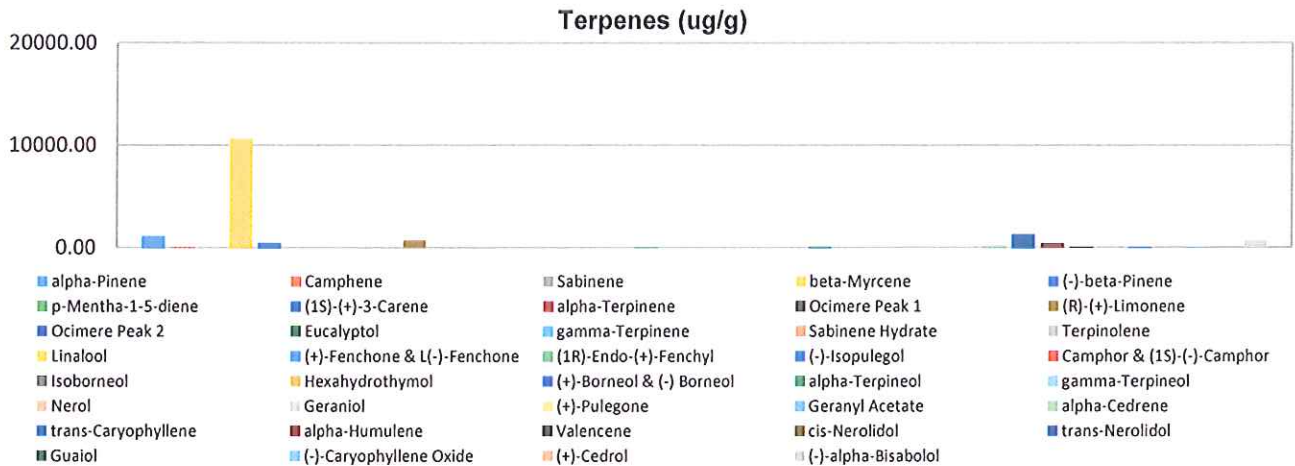
Terpenes Profile

Customer: PWP Greenhouses
Customer Sample ID: PWP-Cherry
Laboratory Number: 201811-0697
Extraction Technician: MTO
Analytical Chemist: RH

Extraction Date(s)	Analysis Date(s)
11/30/2018	11/30/2018

Terpene	Results	Terpene	Results
	ug/g		ug/g
alpha-Pinene	1135.73	Isoborneol	
Camphene	58.68	Hexahydrothymol	
Sabinene		(+)-Borneol & (-) Borneol	
beta-Myrcene	10605.19	alpha-Terpineol	109.18
(-)-beta-Pinene	491.62	gamma-Terpineol	
p-Mentha-1-5-diene		Nerol	
(1S)-(+)-3-Carene		Geraniol	
alpha-Terpinene		(+)-Pulegone	
Ocimere Peak 1		Geranyl Acetate	
(R)-(+)-Limonene	715.17	alpha-Cedrene	238.32
Ocimere Peak 2		trans-Caryophyllene	1332.14
Eucalyptol		alpha-Humulene	381.04
gamma-Terpinene		Valencene	53.69
Sabinene Hydrate		cis-Nerolidol	
Terpinolene		trans-Nerolidol	44.71
Linalool		Guaiol	
(+)-Fenchone & L(-)-Fenchone		(-)-Caryophyllene Oxide	42.51
(1R)-Endo-(+)-Fenchyl	83.83	(+)-Cedrol	
(-)-Isopulegol		(-)-alpha-Bisabolol	664.07
Camphor & (1S)-(-)-Camphor			

Empty result indicates data is less than detection limit. Reporting Limit is roughly 40 ug/g depending on amount extracted.



Altitude Consulting, LLC utilizes NIST traceable Reference Standards and Certified Reference Material to calibrate analytical instruments along with proven analytical methods. The methods are applied in the most ethical manner following good laboratory practice guidelines. The results of this report are based solely on the sample submitted and cannot be reproduced.



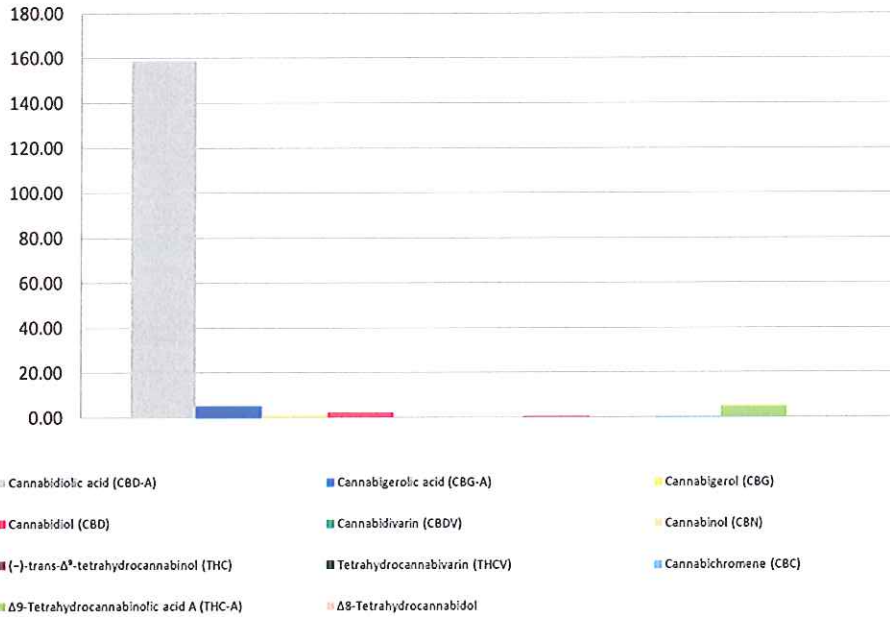
Cannabinoid Profile

Customer: PWP Greenhouses
 Customer Sample ID: PWP-Cherry
 Laboratory Number: 201811-0697
 Extraction Technician: MTO
 Analytical Chemist: RH

Extraction Date(s)	Analysis Date(s)
11/30/2018	11/30/2018

Cannabinoid (HPLC)		Results	
	LOD (mg/g)	Percent	mg/g
Δ8-Tetrahydrocannabinol		0.007%	0.07
Cannabidiolic acid (CBD-A)		15.883%	158.83
Cannabigerolic acid (CBG-A)		0.524%	5.24
Cannabigerol (CBG)		0.045%	0.45
Cannabidiol (CBD)		0.189%	1.89
Cannabidivarin (CBDV)	<0.05		
Cannabinol (CBN)		0.009%	0.09
(-)-trans-Δ ⁹ -tetrahydrocannabinol (THC)		0.024%	0.24
Tetrahydrocannabivarin (THCV)	<0.05		
Cannabichromene (CBC)		0.021%	0.21
Δ9-Tetrahydrocannabinolic acid A (THC-A)		0.486%	4.86
Cannabinoids Total		Percent	mg/g
Max Active THC		0.45%	4.50
Max Active CBD		14.12%	141.19
T. Active Cannabinoids		0.30%	2.95
Total Cannabinoids		17.19%	171.88
Ratios			
31.55		:1 CBD to THC	0.03 :1 THC to CBD

Cannabinoid (mg/g)



Altitude Consulting, LLC utilizes NIST traceable Reference Standards and Certified Reference Material to calibrate analytical instruments along with proven analytical methods. The methods are applied in the most ethical manner following good laboratory practice guidelines. The results of this report are based solely on the sample submitted and cannot be reproduced.