



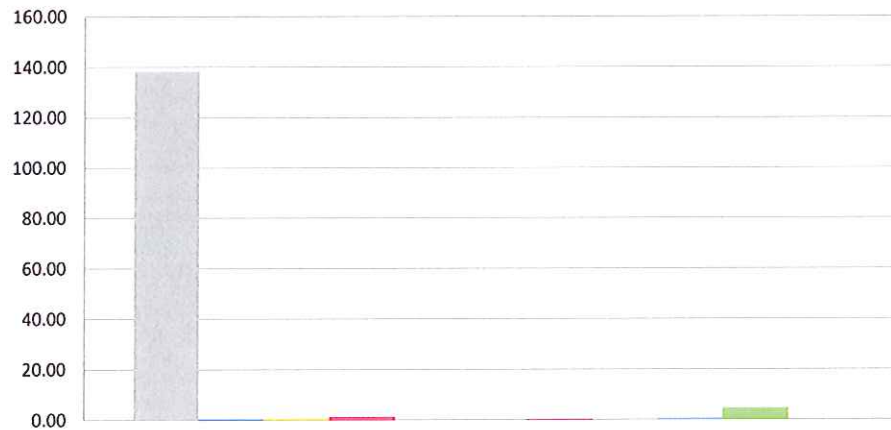
Cannabinoid Profile

Customer: PWP Greenhouses
 Customer Sample ID: PWP-CBD
 Laboratory Number: 201811-0699
 Extraction Technician: MTO
 Analytical Chemist: RH

Extraction Date(s):	Analysis Date(s)
11/30/2018	11/30/2018

Cannabinoid (HPLC)		Results	
	LOD (mg/g)	Percent	mg/g
Δ8-Tetrahydrocannabinol		0.007%	0.07
Cannabidiolic acid (CBD-A)		13.823%	138.23
Cannabigerolic acid (CBG-A)		0.036%	0.36
Cannabigerol (CBG)		0.053%	0.53
Cannabidiol (CBD)		0.113%	1.13
Cannabidivarin (CBDV)	<0.05		
Cannabinol (CBN)	<0.05		
(-)-trans-Δ ⁹ -tetrahydrocannabinol (THC)		0.021%	0.21
Tetrahydrocannabivarin (THCV)	<0.05		
Cannabichromene (CBC)		0.061%	0.61
Δ ⁹ -Tetrahydrocannabinolic acid A (THC-A)		0.461%	4.61
Cannabinoids Total		Percent	mg/g
Max Active THC		0.43%	4.25
Max Active CBD		12.24%	122.36
T. Active Cannabinoids		0.26%	2.55
Total Cannabinoids		14.58%	145.75
Ratios			
28.93		:1 CBD to THC	0.03 :1 THC to CBD

Cannabinoid (mg/g)



- Cannabidiolic acid (CBD-A)
- Cannabigerolic acid (CBG-A)
- Cannabigerol (CBG)
- Cannabidiol (CBD)
- Cannabidivarin (CBDV)
- Cannabinol (CBN)
- (-)-trans-Δ⁹-tetrahydrocannabinol (THC)
- Tetrahydrocannabivarin (THCV)
- Cannabichromene (CBC)
- Δ⁹-Tetrahydrocannabinolic acid A (THC-A)
- Δ8-Tetrahydrocannabinol

Altitude Consulting, LLC utilizes NIST traceable Reference Standards and Certified Reference Material to calibrate analytical instruments along with proven analytical methods. The methods are applied in the most ethical manner following good laboratory practice guidelines. The results of this report are based solely on the sample submitted and cannot be reproduced.



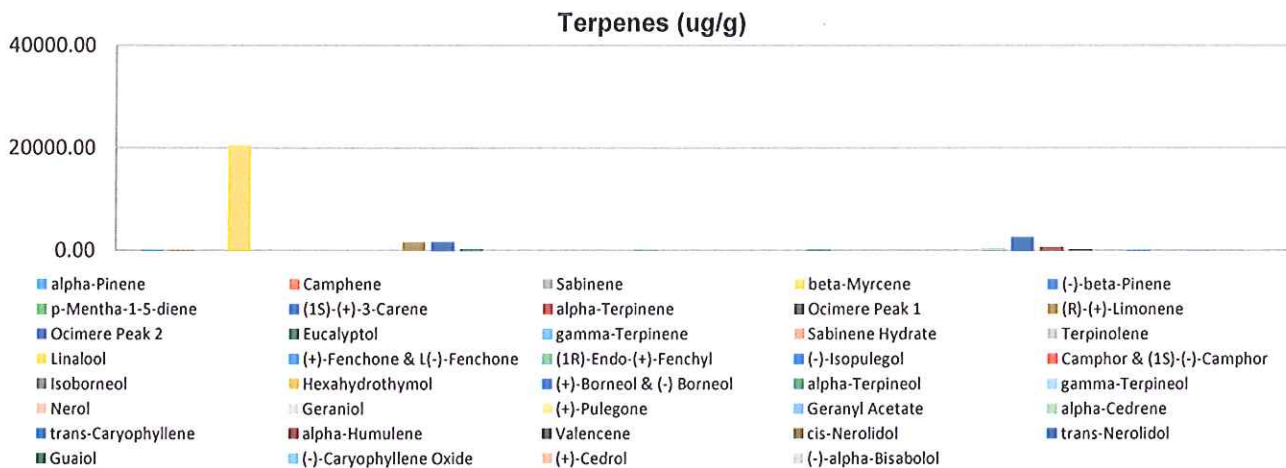
Terpenes Profile

Customer: PWP Greenhouses
Customer Sample ID: PWP-CBD
Laboratory Number: 201811-0699
Extraction Technician: MTO
Analytical Chemist: RH

Extraction Date(s)	Analysis Date(s)
11/30/2018	11/30/2018

Terpene	Results	Terpene	Results
	ug/g		ug/g
alpha-Pinene	107.96	Isoborneol	
Camphene	27.95	Hexahydrothymol	
Sabinene		(+)-Borneol & (-) Borneol	
beta-Myrcene	20503.42	alpha-Terpineol	170.08
(-)-beta-Pinene		gamma-Terpineol	
p-Mentha-1-5-diene		Nerol	
(1S)-(+)-3-Carene		Geraniol	
alpha-Terpinene		(+)-Pulegone	
Ocimere Peak 1		Geranyl Acetate	
(R)-(+)-Limonene	1607.16	alpha-Cedrene	493.77
Ocimere Peak 2	1704.87	trans-Caryophyllene	2589.47
Eucalyptol	322.07	alpha-Humulene	611.58
gamma-Terpinene		Valencene	144.15
Sabinene Hydrate		cis-Nerolidol	
Terpinolene	36.39	trans-Nerolidol	60.72
Linalool		Guaiol	
(+)-Fenchone & L(-)-Fenchone		(-)-Caryophyllene Oxide	32.97
(1R)-Endo-(+)-Fenchyl	176.52	(+)-Cedrol	
(-)-Isopulegol		(-)-alpha-Bisabolol	151.79
Camphor & (1S)-(-)-Camphor			

Empty result indicates data is less than detection limit. Reporting Limit is roughly 40 ug/g depending on amount extracted.



Altitude Consulting, LLC utilizes NIST traceable Reference Standards and Certified Reference Material to calibrate analytical instruments along with proven analytical methods. The methods are applied in the most ethical manner following good laboratory practice guidelines. The results of this report are based solely on the sample submitted and cannot be reproduced.